



# Occidental Institute Research Foundation

## THE BRIDGE

### Linking Practitioners of German Biological Medicine

Volume 9, Issue #9, September 2013

Tuesday, 17 September 2013

Dear Colleagues and Friends of OIRF,

👉 Welcome to the fall Issue #9 of "The Bridge" newsletter for 2013! In this Issue we continue with Part 4 of the seven part series of articles by the esteemed **Prof. Dr. Harmut Heine** on The Ground Regulation System. Here again are the titles of all seven articles:

**Part 1** – The Ground Regulation [A History and Background] – Published Issue #3

**Part 2** – GRS as a non-linear system – structure, function and determined chaos – Published Issue #5

**Part 3** – GRS as a non-linear system – structural components of the extracellular matrix (ECM) – Published Issue #7.

**Part 4** – Spatial structure of the ECM and material transport within the system – Published in this Issue #9

**Part 5** – Contact, limitation and clogging up: Cell adhesion, basal membrane and glycosylation – Scheduled to publish in Issue #11 in mid-November 2013

**Part 6** – Functional relations of the ground regulation with the central nervous system

**Part 7** – The Ground Regulation and the Circadian Rhythm  
– The Ground Regulation and Alzheimer Dementia

In the next Issue of "The Bridge" watch for another of the thought provoking and well researched articles from our Medical Advisor **Dr. Tony Scott-Morley** scheduled for publication in mid-October 2013.

👉 For those of you who missed that great **MORA Nova training seminar/workshop in St. Louis, MO on June 7-9, 2013**, quality video recordings of some of the sessions are now available. The guest instructor was **Nuno Ruivo, DO** from Med-Tronik, Germany who is a long time MORA user and one of the technology and software developers of the Nova device. Order the 5 DVDs for \$100 and then deduct it from your MORA Nova order.

👉 Reminder: All Volume 9 Issues of "The Bridge" will also be published on our website and are available to download in pdf/print format. Follow this link to download your PDF copy of Issue #9.

➡ The **Special 40th Anniversary Biological Medicine Tour to Germany**

program has been finalized and we are ready to go! Places are still available although registrations have come in from Australia, USA and Canada and we are looking forward to hosting an interesting and varied group of practitioners during the three distinct parts of this program. Make your plans to attend now!

This very special tour program (with a journey into Switzerland to visit two large clinics including the **Paracelsus Clinic**) is bringing you a good overview of the many speakers and presentations we have seen during those past 39 tour programs, but at the same time will bring us right up-to-date with all the latest research and development.

Here's a brief introduction to our keynote and featured speakers for this 40th tour program:

- **Jürgen Aschoff, MD** specialist for General Medicine and natural treatments. His fields of specialty include darkfield microscopy, hand-nail-face-tongue diagnosis, iris diagnosis, the electro-magnetic blood test according to Dr. Aschoff (his father), frequency diagnosis and therapy, homeopathic anamnesis, special energetic pain therapy, specialist of the techniques of Royal Raymond Rife.
- **Reimar Banis, MD, PhD, ND** is a doctor, researcher and author. His major methods include Vegatest (where he was the official instructor besides Dr. Helmut Schimmel), thermography, colon hydrotherapy, darkfield, Ozone, neural therapy, chirotherapy and others. Dr. Banis invented Psychosomatic Energetics (PSE) in 1998. He has lectured extensively on PSE worldwide. Trained as a Medical Doctor, Dr. Banis has the unique ability to bridge the gap between conventional and naturopathic healing methods. He is regarded as one of the most advanced and well-known experts in energy medicine in the world.
- **Thomas M Rau, MD** is the medical director of the world famous Paracelsus Clinic in Lustmühl, Switzerland. Dr. Rau has lectured around the world and is dedicated to bringing knowledge of natural and biological medicine to as many practitioners as possible. His fields of specialty include: Homeopathy, Isopathy, Darkfield-Microscopy, Thermography, Neuraltherapy, Chinese Medicine, Dietary and FX-Mayr fasting medicine, 5-element/meridian therapies, Bio-energetic information therapy.
- **Prof. Hendrik Treugut, MD** is founder and president of the prestigious “*German Society for Energy and Information Medicine*”. He is also head of the Radiological Department of the *Klinikum Schwäbisch Gmünd*. His specialties include the latest complementary medicine diagnostic procedures and medical frontiers. He is responsible for development and realization of an EU-master course of studies including energy medicine. He will tell us about his latest research in these areas.
- Hear from the head of the Scientific Dept. of a large and highly respected **German pharmaceutical company**. It was founded in 1956 and is family owned and operated in the 3rd generation. Using a modern potentizing system their line of homeopathic, herbal and vitamin products are based on the procedures and remedies of the famous naturopath Pastor Emanuel Felke.

This jamb-packed program has been custom tailored for all levels of practitioners from the “newbies” to the “oldies”, from those who rely on technology to those who prefer the supplement/remedy approach (or any combination), and primarily for all who are seeking effective and reliable applications for their professional practice use. Be sure to visit our website for full [Germany Tour details](#). A full web page has been devoted to [speaker bios & pics](#) along with the many other presentations we will hear.

The registration deadline for participation in this program is fast approaching on September 30, 2013. Be sure to make your plans today to participate in this exceptional program. Once again here is a brief overview of the speakers, dates and activities of this Tour program:

**Part 1: Oct. 25 to 29, 2013 – Tools.** I want to be really clear about this part of the tour program. These are **not** intended as equipment sales pitches. The emphasis here is on application and how the devices will work in your practice. What are the benefits of each device and how will they increase the effectiveness of your diagnostics and treatments? We will visit and hear lectures from:

- **Advanced Medical Systems** (pulsed magnetic field therapy)
- **Medical Electronics** (BioPhoton Therapy)
- **AlfaThermodiagnostics** (Thermography)
- **Med-Tronik** (Terrain Analysis, BioResonance Therapy, EAV Assessment, Color Therapy/Gruba) – The innovative **MORA Nova**



**Part 2: Oct. 29 to Nov. 4, 2013 – Techniques.** This is the part where we will participate in the Medicine Week Congress, hear lectures about the latest methods and techniques in Europe and have ample time to visit the exhibits. Confirmed presentations include:

Our Keynote and Featured Speakers:

- **Dr. Jürgen Aschoff** (Darkfield Microscopy, Blood Test acc. Aschoff, Frequency Medicine)
- **Dr. Reimar Banis** (Psychosomatic Energetics)
- **Dr. Thomas Rau** (Biological Medicine Practitioner and Teacher)
- **Prof. Dr. Hendrik Treugut** (Biological Medicine Researcher)

Attend Med-Week English lectures featuring:

- **Dr. Dietrich Klinghardt** (Biological Medicine Practitioner and Teacher)
- **Dr. Frank Beck** (Researcher and Scientist)
- **Dr. Kai Lühr** (Biological Medicine Practitioner)
- **Illobrand von Ludwiger** (famous Astro-physicist & Author)

And hear a private presentation from:

- A well known and longtime **German pharmacy** of biological remedies

**Part 3: Nov. 4 to 7, 2013 – Applications.** This part of the tour involves considerable travel however you are going to see some of the most spectacular scenery. We will be traveling into the Alps and the area of the Bodensee (Lake Boden) on the Swiss/German border where we will tour and hear about three unique and exceptional Biological Medicine clinics:

- The Swiss centre for the holistic treatment of cancer, chronic pain, psychosomatic diseases (burnout, depression), chronic ailments (rheumatism, skin diseases, stomach and intestinal disorders), as well as dental diseases.
- The famous **Paracelsus Clinic** in Lustmuhl, Switzerland. **Dr. Thomas Rau** will greet us and will also give us a short presentation about Live Cell Therapy and other methods they utilize.
- Back into Germany and another very famous clinic that utilizes a number of natural and biological methods for anxiety, depression, pain, immune weakness and allergies.

I realize it is difficult to take a full two weeks away from your practice – family, staff and patients will miss you and it's hard on the pocket book! This is why we arranged everything so you can pick and choose which parts will work best for your schedule. However, we already have registrations for the full two weeks and for Parts 2 and 3 combined.

➡ Here are your newsletter items for this Issue #9:

*An **exclusive article** published September 2013  
by Occidental Institute Research Foundation . . .*

## **The Ground Regulation System (GRS)**

### **Part 4 – Spatial Structure of the ECM and Material Transport within the System**

By o. Univ.Prof. Dr.rer.nat. med.habil. Hartmut Heine

**From an article in Naturheilkunde 2010; 3: 32-34. Reprinted in  
Der Weg zur Grundregulation, Zaen Plus GmbH 2011, 271-274**

**Machine Translation by SYSTRAN, Lernout & Hauspie, LogoMedia & Promt  
Translation & redaction by: Carolyn L. Winsor, OIRF**

© Copyright 2009-2011, Prof. Dr. Hartmut Heine, Neuhausen, Germany

Over a long period of time the ancient theory of the [bodily] humors has changed to the Ground Regulation System (GRS). The oldest and most effective theory of the history of medicine thus became a theory of complementary medicine. Here school [orthodox] medicine and complementary medicine find a common denominator. After handling the historical background (Part 1) and the introduction to the representation of the GRS as a non-linear system (Parts 2 and 3), the structural analysis of the extracellular matrix under the aspects of spatial structure and material transport within the system is continued in this Part 4.

The great reactivity of the Ground Regulation is bound to its dynamic, hyperboloid tunnel structures in the extracellular matrix (ECM). The PG/GAG hyperboloid is capable of formation of the inclusion complexes: Hydrophobic substances are transported internally, hydrophilic substances are bound externally. In this manner both substances can be transported at the same time.

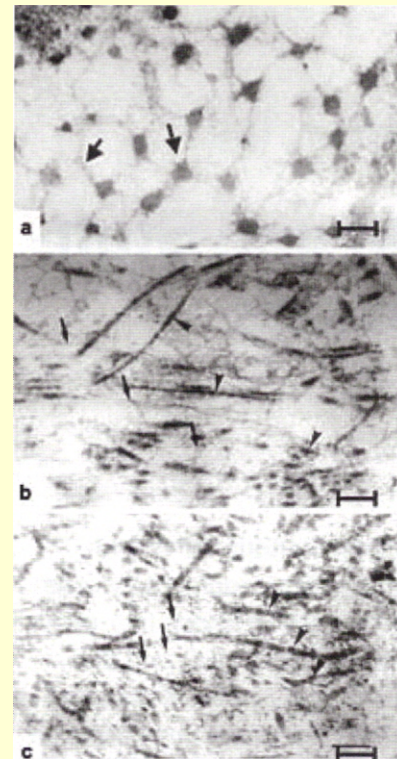
All cells are bound across the receptors in the ECM components. In this way a tension- and pressure-system (tensegrity) originates between the cells and the ECM, which is of crucial importance for the maintenance of the homeodynamic – also in the case of illness. As a result, a special guardian and information function falls to the cytokines.

## Spatial Structure of the ECM

In nature the principle of “space filling” through self similar structures predominates. Self similarity means that for example all people look similar and likewise their organs, organ structures, cells and genetic material. As was explained in more detail in Part 2, self similarity is characteristic of determined chaos. Thus unstable orderly systems are described on the edge of chaos, which maintain themselves autopoetically away from a thermal balance. This self similarity is also valid for the ECM. This molecular sieve is substantially formed by the PG/GAGs. If tissue is reviewed conventionally for the electron microscope it shows the ECM as a network of PG/GAGs, passed through from collagen and elastic fibers (Fig. 1).

**Figure 1:** Ultrastructural changes in the subepidermal ECM in old age. Heavy metal (Ruthenium Red) contrasted to sugar components in the ECM.

- a) 3 year old child. Clear network structure of the globular appearing proteoglycan (arrows) and the fine ropes of hyaluronic acid connecting them.
- b) 63 year old healthy woman. Collagen increase (arrow heads) and decrease as well as refinement of the proteoglycan/glycosamine glycan (PG/GAGs) network.
- c) 63 year old woman with metabolic syndrome. Besides “washed out” collagen fibrils (arrow heads) fine precipitations (arrows) are found everywhere in the PG/GAG network, which originate through non-enzymatic glycosylation by glucose utilization disturbances and peroxidation through oxygen radicals (“advanced glycation end products”). Standard 100 nm (from Heine 2007).

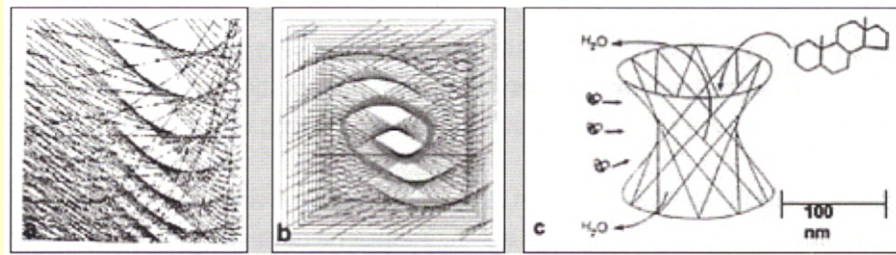


In Figure 1 it is immediately apparent that the meshes of the networks are not congruent anywhere, but are always self similar.

The spatial organization of the PG/GAG networks can be shown by random overlapping line grids (Fig. 2). Nevertheless, you recognize hyperboloid spiral-like tunnel structures as the suprastructure of the ECM. (This is also valid for the ECM in the CNS) [1]. The respective organ parenchymal cells nestle themselves in the hyperboloid of the ECM virtually as negative. As a result the power transmission between the ECM and the organ

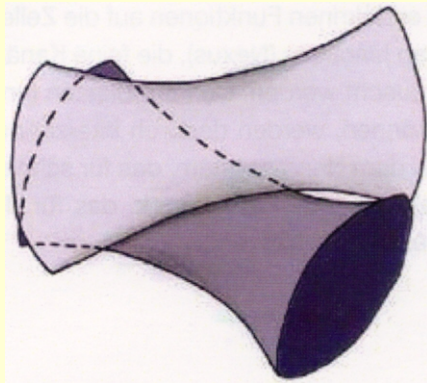


parenchymal cells occurs according to the technical principle of the transference of the spin of one wave arbitrarily onto another through two interactive hyperboloids (Fig. 3) [1].



**Figure 2:** Spatial structure of the PG/GAGs.

- a) Computer simulation. PG/GAG network by randomly putting straight line grids on top of each other. From a certain density "ordered islands" (intermittency) appear.
- b) The spatial representation nevertheless shows that it concerns hyperbolic tunnel structures.
- c) Hyperbolic tunnel structure in the ECM for the transport of hydrophobic substances into the internal tunnel in the example of steroids. Connection of hydrophilic substances (arrow) to the external tunnel ("guest-host complexation") (from Heine 2007).



**Figure 3:** Hyperboloid power transmission. Two hyperboloids mediate the spins of one wave to one arbitrarily otherwise directed (from Heine 2007).

Because the surface of a Hyperboloid represents an energetic minimal surface an electron with minimal energy can for example release a maximum of movement on such surfaces [2]. Hence minimal does not refer to the surface but to the potential energy in the area of each smallest surface segment. Minimal surfaces show a negative Gaussian Curve, like on a saddle, joint condyles, nose, ears among others. All organs as well as all topographical regions of the body surface are hyperboloid shaped. This reaches into the molecular dimensions like the DNA, the active centers of the enzymes or the  $\alpha$ - and  $\beta$ -folds of the proteins [3].

In the computer simulation by randomly putting straight line grids (about 20-50) on top of each other ordered islands (intermittency) appear which constantly come into being and die anew whereby the impression of a very fast mobility of the hyperboloid tunnel structure originates.

The tunnel has transferred a diameter corresponding to the mesh width of the PG/GAGs of about 50-150 nm (compare with Fig. 1) and a length which must correspond to at least one PG molecule (about 300 nm) to the fine structural relationship of the PG/GAG network in the ECM. The time factor as the 4th dimension is necessarily taken into consideration here, because only by the quick construction and breakdown (fractions of seconds) and by the mobility of the tunnel is an adequate adaptation moment given in the time-related longer sustained hyperboloid over-structures from the organs and body surface as well as their development and ageing process. A good example is the heart development in mammals: If the unseptated structure starts to beat in the middle of the third development week, it already shows a typical ECG. Then the occurring redistribution, torsion and septation take place during the ongoing development (7th to 8th weeks for people) [4].

### **Material Transport in the ECM**

Through the simple possibility of the ring ends of the PG/GAGs [Refer to Fig. 3, The Bridge, Vol. 9, Issue #7, Part 3, bottom of Page Six] the dynamic “molecule cages” originate from the hyperboloid tunnel structures. In their inside hydrophobic (e.g. fat soluble) organic substances can be transported under water displacement. At the same time hydrophilic substances are “carried along” in their outer walls (Fig. 2). Such inclusion complexes (“guest-host complexation” as they are known for a long time, for example from Cyclodextrin) are used in pharmacology as carriers for medication molecules and flavorings (Overview in [1]).

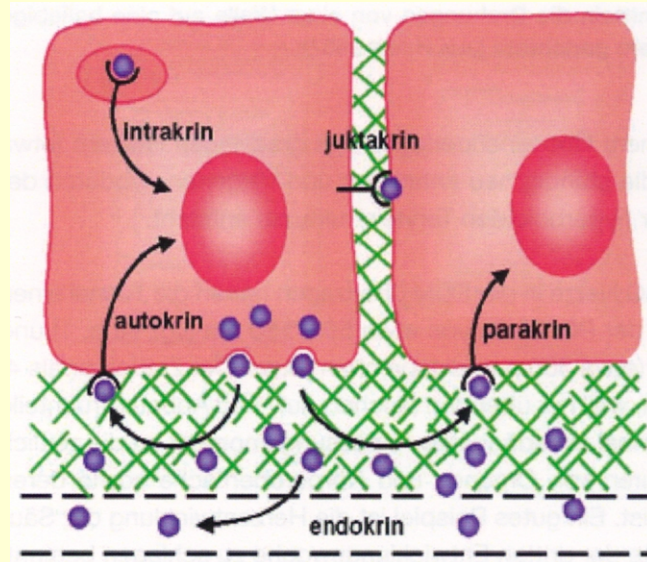
At the same time the hyperbolic curve of the tunnel wall provides for an energetic minimum of the binding energies of the molecule in the inner and outer tunnel walls as well as their positioning to each other. The complexation apparently occurs non-enzymatically and can also occur with several “guests”. The bioavailability of hydrophobic substances therefore decisively depends on the ability of the ECM to be able to form hyperbolic tunnels [1]. The silicon dependent reverse selective permeability properties of the PG/GAG hydrogels remain untouched by it (they were described in Part 3).

### **The Cytokine Network of the ECM**

Cytokines (including growth factors and chemokines) represent small molecular cellular messenger materials which released into the ECM over the auto-, para-, juxta- and endocrine functions have an effect on the cells (Fig. 4). They can also be exchanged intercellularly directly across gap junctions (Nexus) which form fine channels (diameter 2 nm) in the area of the cell contacts. Because fibroblasts (and astrocytes) can step one

below the other in dynamic nexus contact, precise information is thereby led intercellularly in coordination with the ECM. Besides the nervous system which provides fast information management to the CNS, there exists with it a highly active information mechanism which is better suited for the fine coordination of local phenomena better than the terminal nerve fibers.

**Figure 4:** Mechanism of the Cytokines (violet balls). They are formed from cells and have an effect on them in a different manner: Autocrine repercussion on receptors of the same cells; intracrine effect on the same cells after endocytotic absorption of the occupied receptors; paracrine effect on the receptors of other cells; juxtacrine effect on the receptors of neighboring cells; endocrine long-distance effect over the blood and lymph vessels. The fields characterize the ECM (from Heine 2007).



The cytokine released into the ECM attains its full functional ability only through the connection to the PG/GAGs. Here its quaternary structure “matures”; i.e. its spatial structure, which leads to the active form of the molecules (e.g. through proteolytic splitting from a PG connection like the Transforming Growth Factor beta [1]).

The cytokine network forms in the ECM space-temporal information pattern, which is switched on in the fine coordination of all functions of the cell-ECM relationship. As a result the PG/GAGs serve as receptors, protectors and storage. Cytokines are also involved in the construction and breakdown of PG/GAGs (overview in [1]). Therefore disturbances of the PG/GAGs (e.g. wrong foods, stress, environmental poisons) are connected with functional disturbances in the signal network of the cytokines [1]. This has great importance for the development of chronic illnesses in addition to tumors [5].



**Prof. Dr. Hartmut Heine**



### Literatur

1. HEINE H. Lehrbuch der biologischen Medizin. 3. Aufl. Stuttgart: Hippokrates 2007
2. KARCHER H, POLTHIER K. Die Geometrie von Minimalflächen. Spektrum der Wissenschaft 1990; Heft 10: 96-107
3. SCHNERING HG v. Die Krümmung chemischer Strukturen. Nova acta Leopoldina NF; 1991; 65: 89-103
4. HEINE H. Stammes- und Entwicklungsgeschichte des Herzens lungenatmender Wirbeltiere. Abh senckenb naturforsch Ges 1976; 535: 1-130
5. HALLE M, BERG A, KEUL J. Übergewicht als Risikofaktor kardiovaskulärer Erkrankungen und die mögliche Bedeutung als Promotor einer gesteigerten Entzündungsreaktion. Dtsch Med Wochenschr. 1999; 124: 905-909

Follow this link to our website to see Issue #9 in print/PDF format.



### ➡ Conferences and Conventions:

**Germany Tour Registration deadline is September 30!** – Call today to reserve your place, make your airline reservations and clear clinic calendar!



## Occidental Institute Research Foundation

### 40th Biological Medicine Tour to Germany

**Theme: Tools, Techniques and Applications**

**Part 1, Oct. 25-29, 2013 - Tools:** Visit or hear from five quality and effectiveness proven instrumentation companies with practical demonstrations of their latest innovations and introduction of the latest research and development.

**Part 2, Oct. 29-Nov. 4, 2013- Techniques:** Visit and participate in the famous Medicine Week Congress in Baden-Baden And hear privately arranged English language lectures from:

- **Dr. Jürgen Aschoff** – Energy Medicine Practitioner & Researcher
- **Dr. Reimar Banis** – Psychosomatic Energetics
- **Dr. Thomas Rau** – Biological Medicine Practitioner & Teacher
- **Prof. Dr. Hendrik Treugut** – Biological Medicine Researcher

Attend Medicine Week (English) lectures featuring:

- **Dr. Dietrich Klinghardt** – Biological Medicine Practitioner & Teacher
- **Dr. Kai Lühr** – Biological Medicine Practitioner & Teacher
- **Illobrand von Ludwiger** – famous Astrophysicist & Author

**Part 3, Nov. 4-7, 2013 – Applications:**

Visit three very famous clinics including the **Paracelsus Clinic** in Switzerland with a lecture from **Dr. Thomas Rau** on Live Cell Therapy. See these Biological Medicine "Tools and Techniques" in practical everyday application.

- Our private lectures present the latest information and research in our field, with ample time for questions and hands-on.
- An opportunity to talk with like-minded colleagues and learn from the experience and expertise of attending OIRF Directors and Advisors.
- Hear from a well known German pharmacy of biological remedies
- Travel in comfort with plenty of room for luggage
- Tour prices includes full tour program, single room accommodations and most meals
- Be treated like family with good food, good friends and good conversation in friendly hotels

**SPACES ARE LIMITED AND ADVANCE REGISTRATION IS RECOMMENDED.**

**[Biological Medicine Tour #40](#) information and [Register here](#)**

**For more details contact:** Occidental Institute, [www.oirf.com](http://www.oirf.com); E-Mail: [support@oirf.com](mailto:support@oirf.com)

PO Box 100, Penticton, BC V2A 6J9 Canada and register at 800-663-8342 or (250) 490-3318

### ➡ Last Chance for Summer Specials on Instrumentation:

- **Ionized Oxygen 3000** of **Prof. Dr. Ivan Engler** by CStronik  
Summer Special discount price \* CDN/US \$5,555
- **VNS Diagnosis 3000** of **Prof. Dr. Ivan Engler** by CStronik  
Summer Special discount price\* CDN/US \$5,490  
Purchased at the same time as a set CDN/US \$10,900
- **BioPhoton Therapy HPT 3D** by Medical Electronics  
Summer Special discount price CDN/US \$12,500

Please see brief descriptions of these devices in previous issues. Full descriptions are available on our website at [www.oirf.com](http://www.oirf.com).

\* **Some restrictions apply:** Time limited offer dependent on current Euro to CDN/US exchange rates. This is a funds transfer offer only – credit card purchases at regular published price.

### ➡ Updates, Reminders and Announcements:

➤ Watch for the tenth 2013 issue of the “The Bridge” newsletter to arrive in your Inbox around mid-October. We will be featuring another article from our well respected Medical Advisor, **Dr. Tony Scott-Morley**. As a long time respected expert in **EAV testing procedures** and the **application of MORA Therapy**, I am looking forward to seeing his scholarly and erudite contribution for this year.

➤ Part 5 of **Prof. Dr. Heine's** articles on the **Ground Regulation System** will publish in Issue #11 of “The Bridge” in mid-November, 2013.



➤ Visit our **Facebook** page – will you be our friend?

➤ If you were unable to attend the **International Alternative Medical Conference** this past weekend in St. Louis, Missouri as sponsored by **Prevention and Healing** and **Dr. Simon Yu**, you really missed a good one! We missed seeing you and hope you will be joining us at other events soon. I understand that professionally recorded video tapes of the sessions will be available shortly and I will let you know order information as soon as we have details.

➤ For a complete [listing of resource materials](#), including publications, reports, books and videos please follow this link to our website. There are full descriptions of all printed and recorded materials online.

➤ For a complete [listing of recommended instrumentation](#), including diagnostic, therapeutic and BioResonance devices please follow this link to our website. There are full descriptions of all instrumentation online.

### ➡ Short comments:

Ever heard of **Chatelaine Magazine**? I realize it is not the latest and most accurate medical source – but – please pay attention all my “gluten free” friends and colleagues! In the June 2013 issue of Chatelaine **Ms. Lora Grady** presented their Special Health Report called “*Food Allergies 101*”. It is not necessarily a scholarly article, but it is well researched and presented with a great deal of practicality. I particularly liked her: “**Bottom Line:** *Unless you have celiac disease or have a proven sensitivity, there’s no scientific support for cutting gluten from your diet. But, if you think it makes you feel better, there’s nothing wrong with limiting [note she did **not** say eliminating] your gluten intake.*” Let us all take a little more care, do a little more testing (whether you use EAV, VEGA, Kinesiology – whatever) and make sure that our patients are not being led by the latest “fad diet” that can actually do permanent harm. CLWS

I trust you have found much of interest in these pages. We look forward to meeting you during our 2013 activities and programs. As always your comments are welcome. Remember that this is your newsletter – your suggestions, article contributions, critiques, FAQ's and compliments – are gratefully accepted.

Enjoy . . .

***Carolyn***

Carolyn L. Winsor-Sturm  
Managing Director  
Phone: (250) 490-3318  
[support@oirf.com](mailto:support@oirf.com)

To Unsubscribe send an email to [support@oirf.com](mailto:support@oirf.com) with "unsubscribe" in the Subject Line.

**Published by Occidental Institute Research Foundation**

P. O. Box 100, Penticton, BC V2A 6J9 Canada  
Telephone: (250)490-3318 Fax: (250) 490-3348  
Website: [www.oirf.com](http://www.oirf.com) Email: [support@oirf.com](mailto:support@oirf.com)



Published in Canada